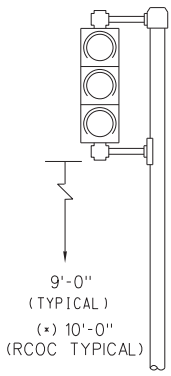
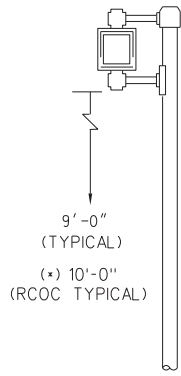


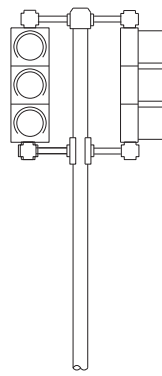
(* Refer to Note 4 on Sheet 2 of 2.



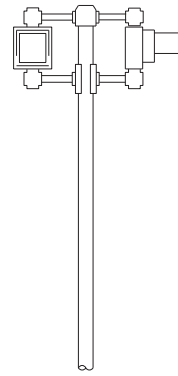
DETAIL "A-2"



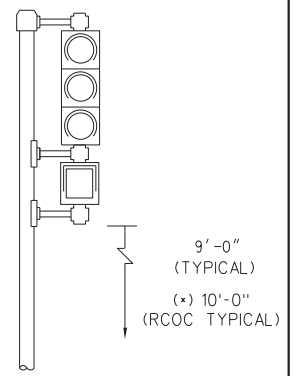
DETAIL "B-2"



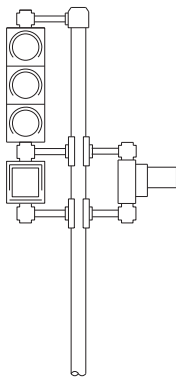
DETAIL "C-2"



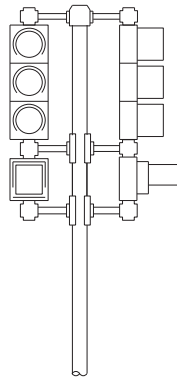
DETAIL "D-2"



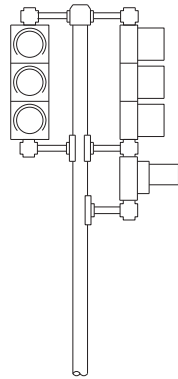
DETAIL "E-2"



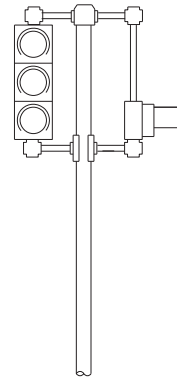
DETAIL "F-2"



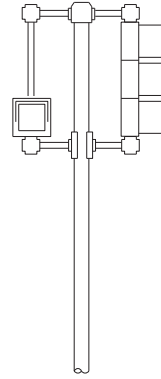
DETAIL "G-2"



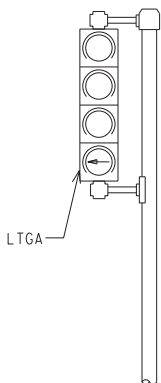
DETAIL "H-2"



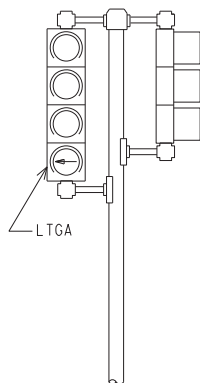
DETAIL "I-2"



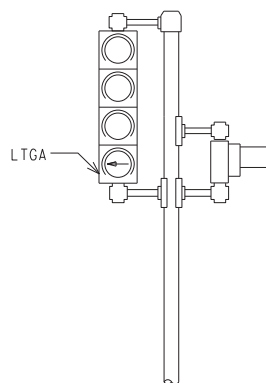
DETAIL "J-2"



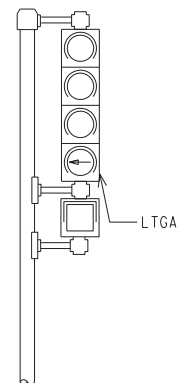
DETAIL "K-2"



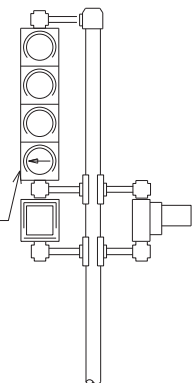
DETAIL "L-2"



DETAIL "M-2"



DETAIL "N-2"



DETAIL "O-2"

Left Turn Green Arrow (LTGA)

NOT TO SCALE

File: RefDoc/TR/Signals/Web/Sp Det/Fin/SIG330A.dgn Rev: 02/16/17



PREPARED BY
TRAFFIC AND SAFETY

DRAWN BY:
CHECKED BY:

ENGINEER OF DELIVERY

ENGINEER OF DEVELOPMENT

(SPECIAL DETAIL)
FHWA APPROVAL DATE

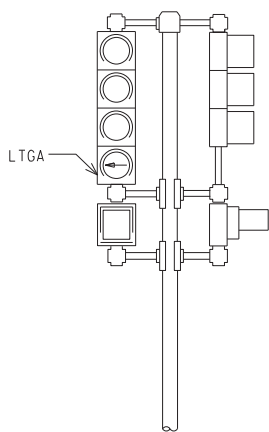
MICHIGAN DEPARTMENT OF TRANSPORTATION
BUREAU OF HIGHWAYS DELIVERY STANDARD PLAN FOR

PEDESTAL MOUNTED
SIGNAL DISPLAYS

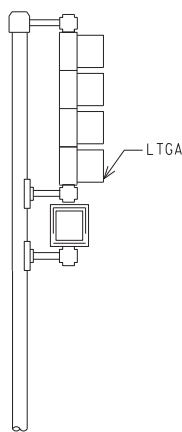
SIG-330-A

PLAN DATE

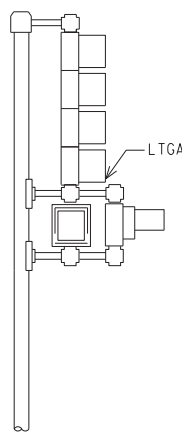
SHEET
1 of 2



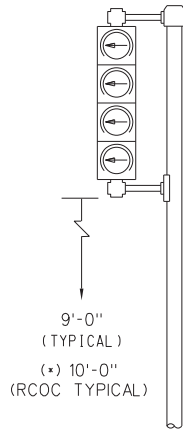
DETAIL "P-2"



DETAIL "Q-2"

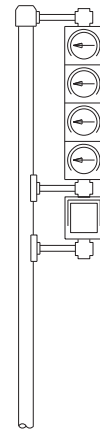


DETAIL "R-2"



DETAIL "S-2"

(FYA)

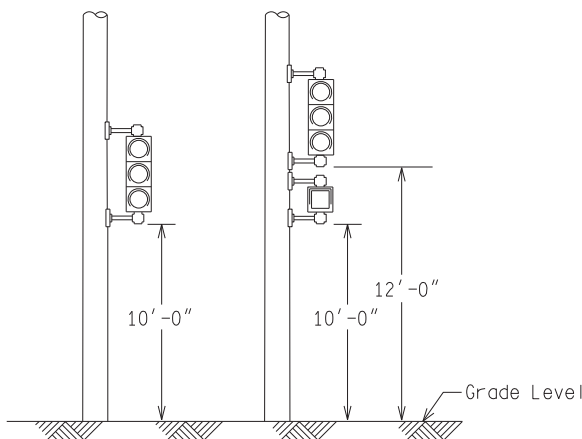


DETAIL "T-2"

(FYA)

Left Turn Green Arrow (LTGA)

Flashing Yellow Arrow (FYA)



RCOC Mounting Detail (*) see note

DETAIL "U-2"

(FYA)

DETAIL "V-2"

(FYA)

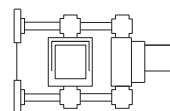
DETAIL "Typical"

WITH CASE SIGN

Flashing Yellow Arrow (FYA)

NOTE:

- 1) Pipe assembly shall be such length and height as to accommodate traffic signals and pedestrian signals for proper maintenance and clear vehicular and pedestrian viewing.
 - 2) Pipe assembly shall be of such length and height as to accommodate an illuminated (12"x27") case sign for proper maintenance and clear vehicular viewing.
 - 3) Bracket lengths are 16 inches for LED pedestrian signals and for LED pedestrian countdown signals.
 - 4) Tolerance within $\pm 1/8"$ for bracketing.
- (*) For projects maintained by the Road Commission for Oakland County (RCOC), use the bottom heights and bracket assemblies as shown for the RCOC mounting detail.



LED PED

NOTE:
Walking person and hand symbol are filled.



LED PED (filled)



Countdown LED PED (filled symbols)

NOT TO SCALE

MICHIGAN DEPARTMENT OF TRANSPORTATION
BUREAU OF HIGHWAYS DELIVERY STANDARD PLAN

(SPECIAL DETAIL)
FHWA APPROVAL DATE

File: RefDoc/TR/Signals/Web/Sp Det/Fin/SIG330A.dgn

Rev. 02/16/17

PLAN DATE

SIG-330-A

SHEET
2 of 2